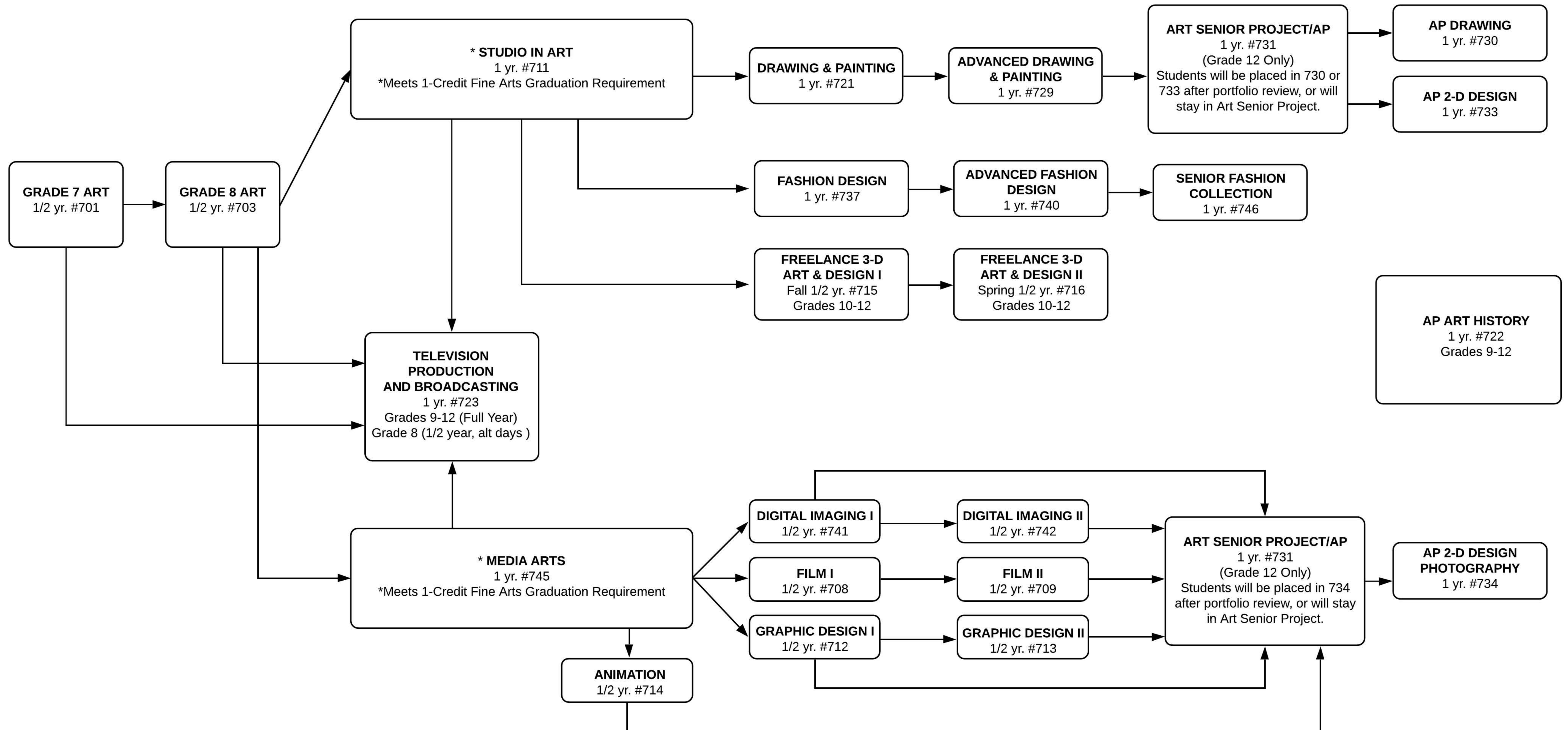
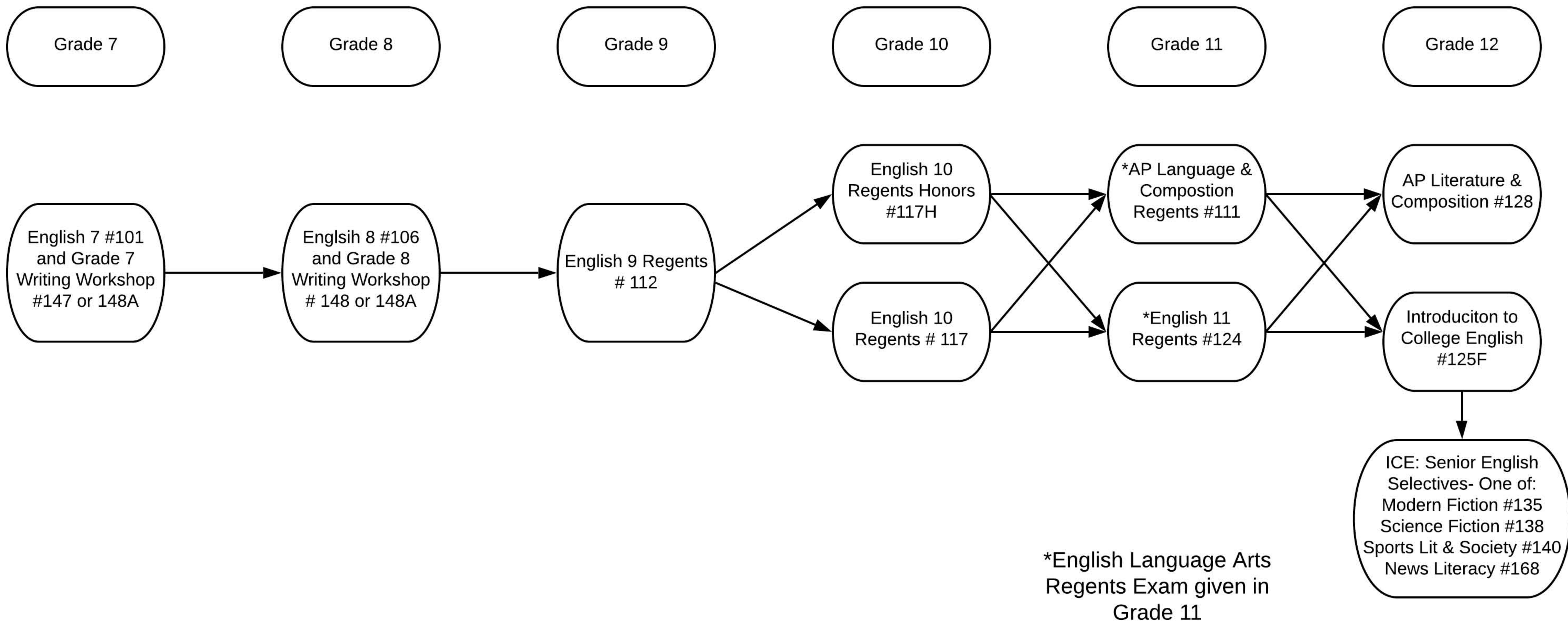


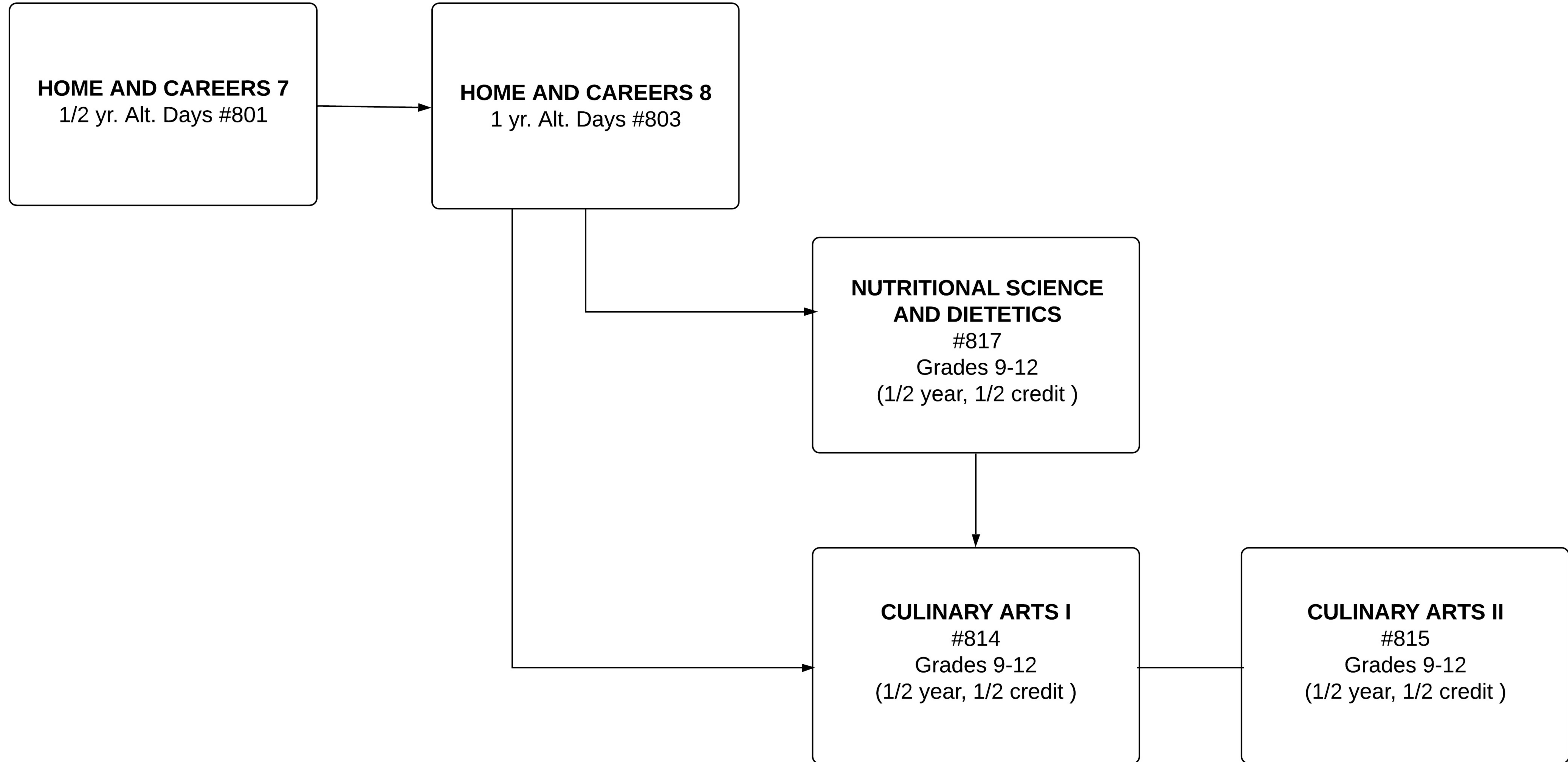
# ART DEPARTMENT CURRICULUM



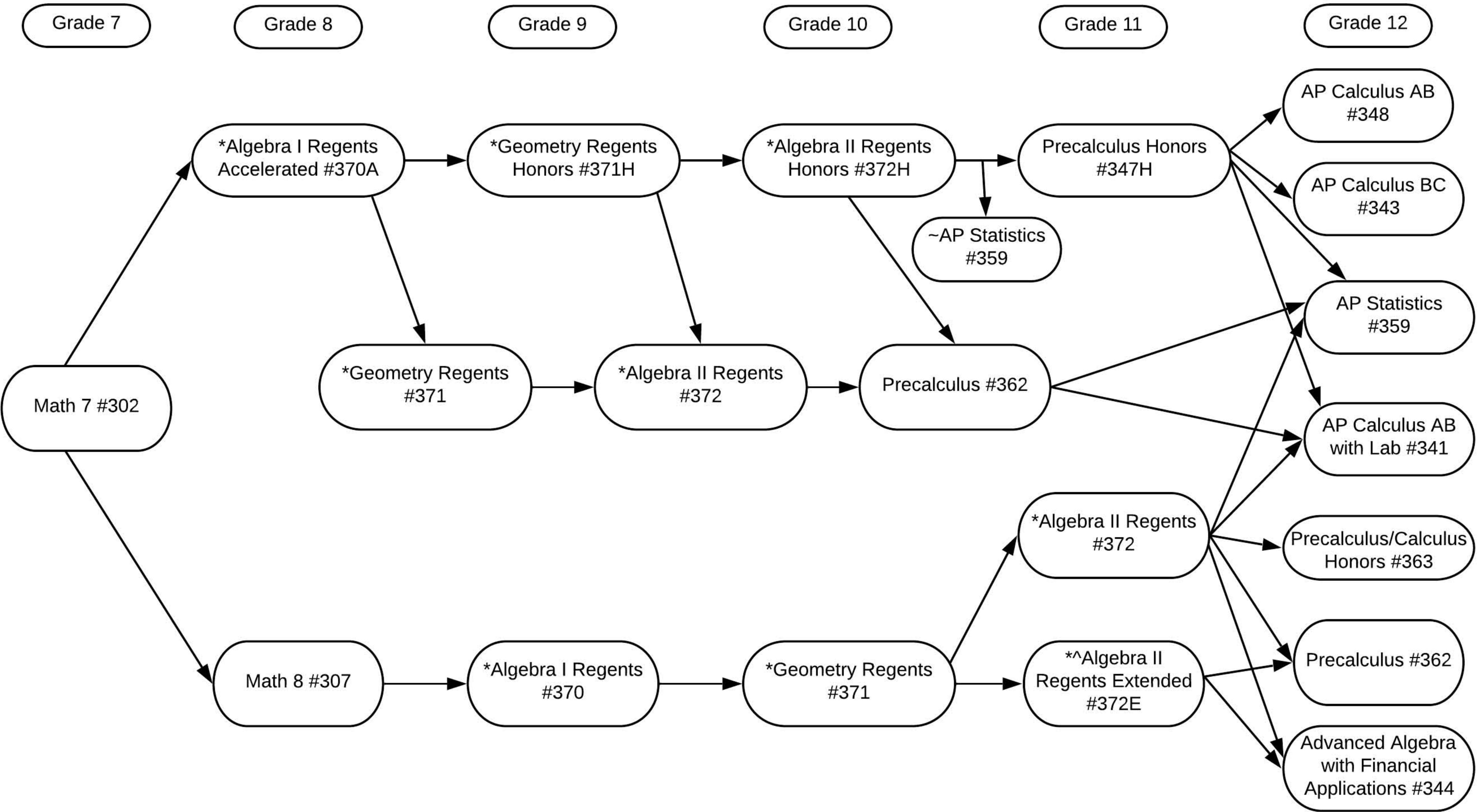
# English Curriculum



# FAMILY AND CONSUMER SCIENCE



# Math Curriculum



\*Regents exam in June

^Extended Classes meet one period every day and a double period every other day

~ Course may run conc

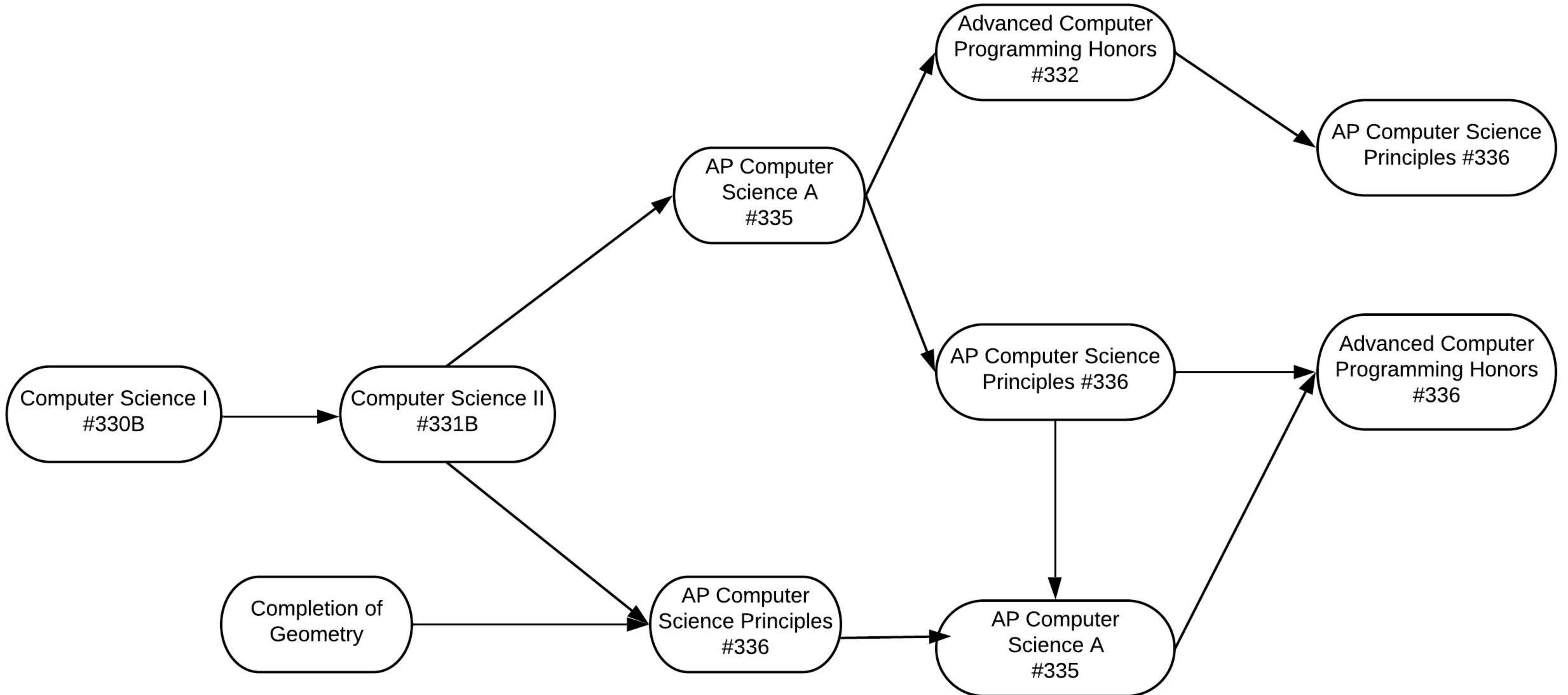
The following electives are offered for grades 9-12: Computer Science I (330B); Computer Science II (331B).

The following electives are offered for grades 10-12: Statistics (340); Advanced Placement Computer Science

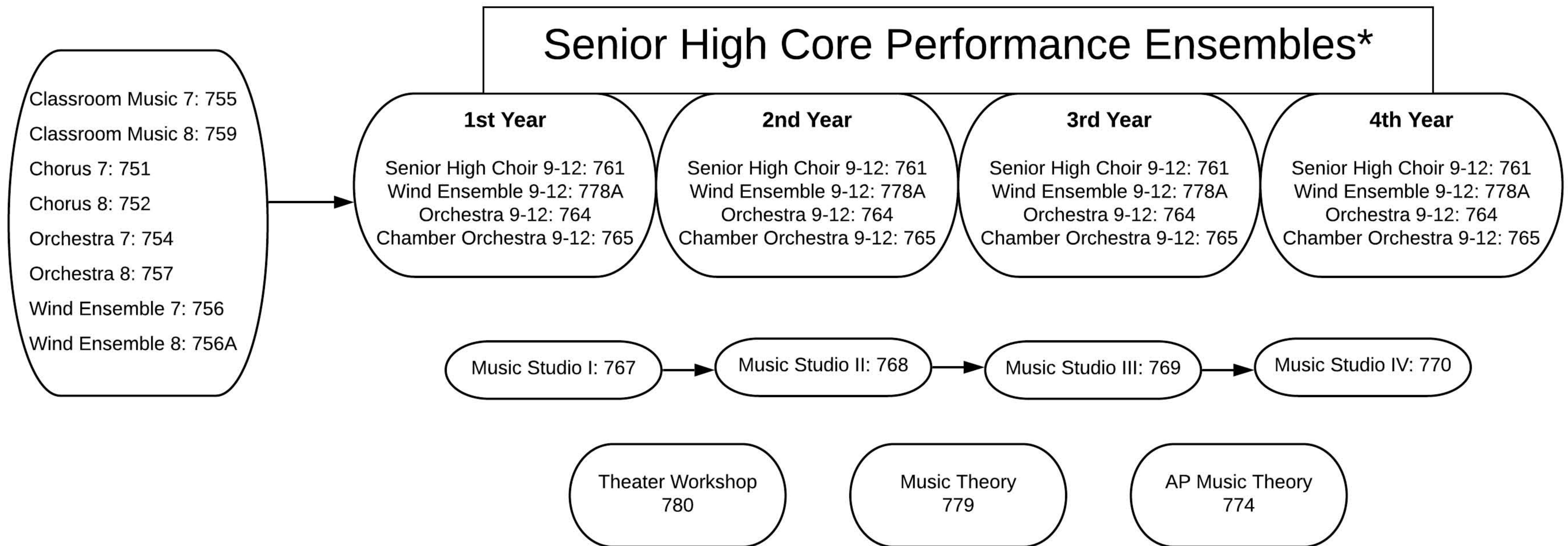
Principles (336); Advanced Computer Programming Honors (332)

The following electives are offered for grades 11-12: AP Statistics (359)

# Computer Science Curriculum



# Music Curriculum



\* Enrollment in a core performance ensemble is required for selection to the following honors performing organizations and is also a prerequisite for All-State Auditions: NAFME All-National and All-Eastern; NYSSMA All-State; NMEA All-County, Long Island String Festival Association (LISFA) and American Choral Directors Association (ACDA).

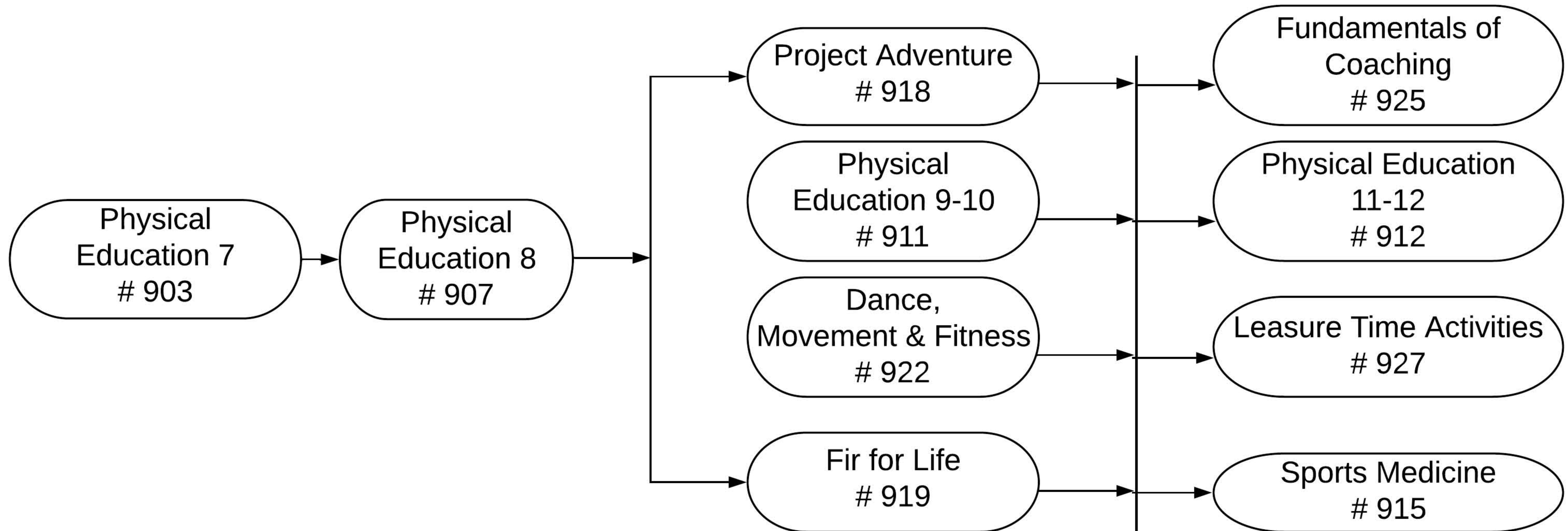
Classroom Music 7 and Classroom Music 8 will not run in 2020-21. The required 1/2 Credit in music for J r. High will be met with Chorus, Orchestra or Wind Ensemble

In order to be eligible for the prestigious Tri-M Music Honor Society, students must enroll for a full credit in a core performing ensemble for four complete years

Enrollment in a core performane ensemble is required to audition and participate in extra-curricular music groups such as Chamber Singers, Junior/Senior High Jazz band and the Junior/Senior High Pit Orchestra

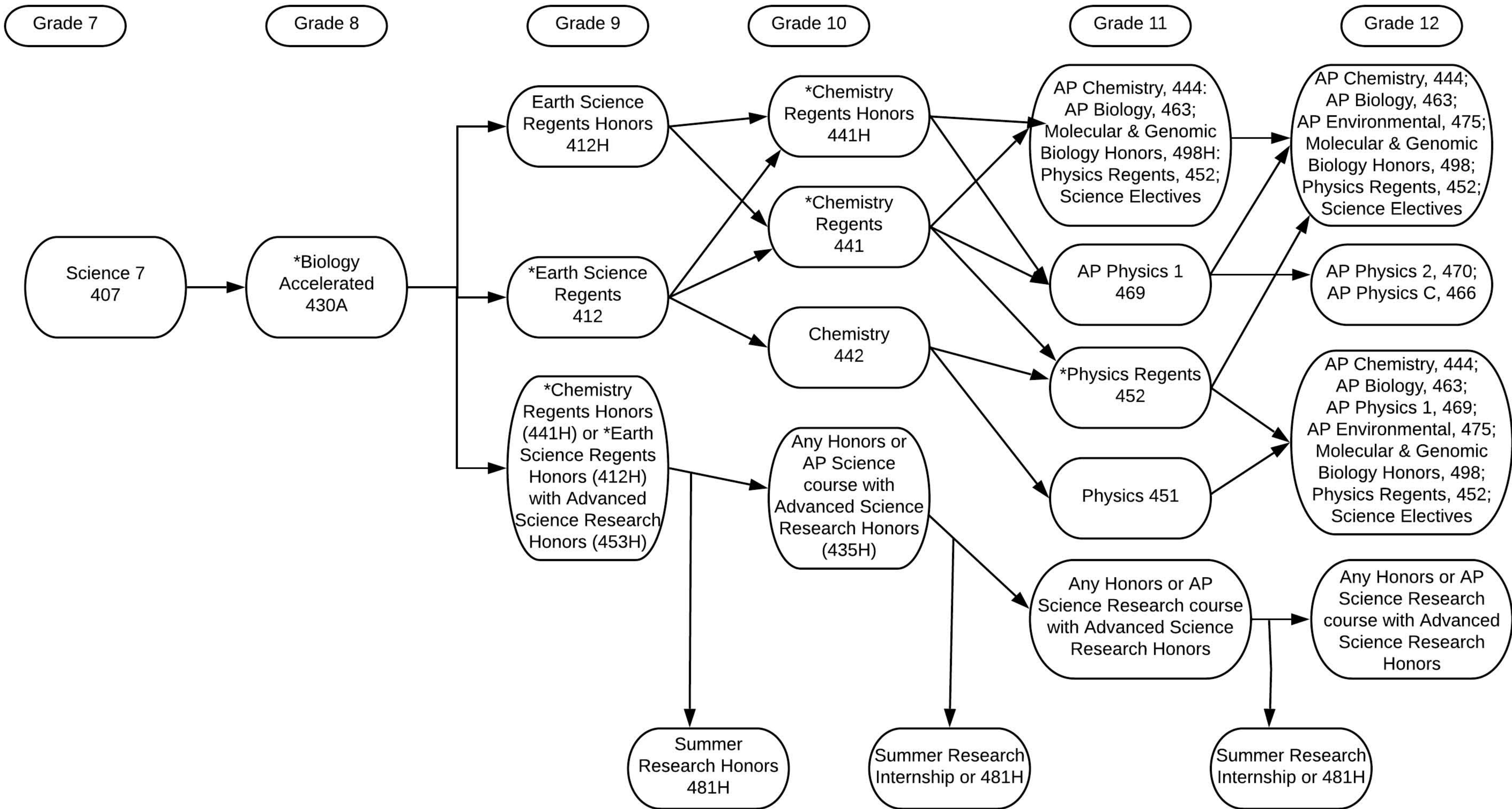
NOTE: The following classes are the only music classes that fulfill New York State's graduation requirement in the Arts: 1) 1st Year Senior High Core Performance Ensemble, 2) AP Music Theory, 3) Theater Workshop or, 4) Music Studio

# Physical Education



If a High School student takes Physical Education 9-10 or Physical Education 11-12 along with a Physical Education elective in the same school year, the elective will be included in their GPA calculations. If a High School student takes two Physical Education elective courses in the same school year, one of the course must be selected to count in their GPA calculation This selection will take place by the end of the fourth week of school. Physical Education 9-10 and 11-12 are not counted in a student GPA or WGPA.

# Science Curriculum



\*Regents exam in June

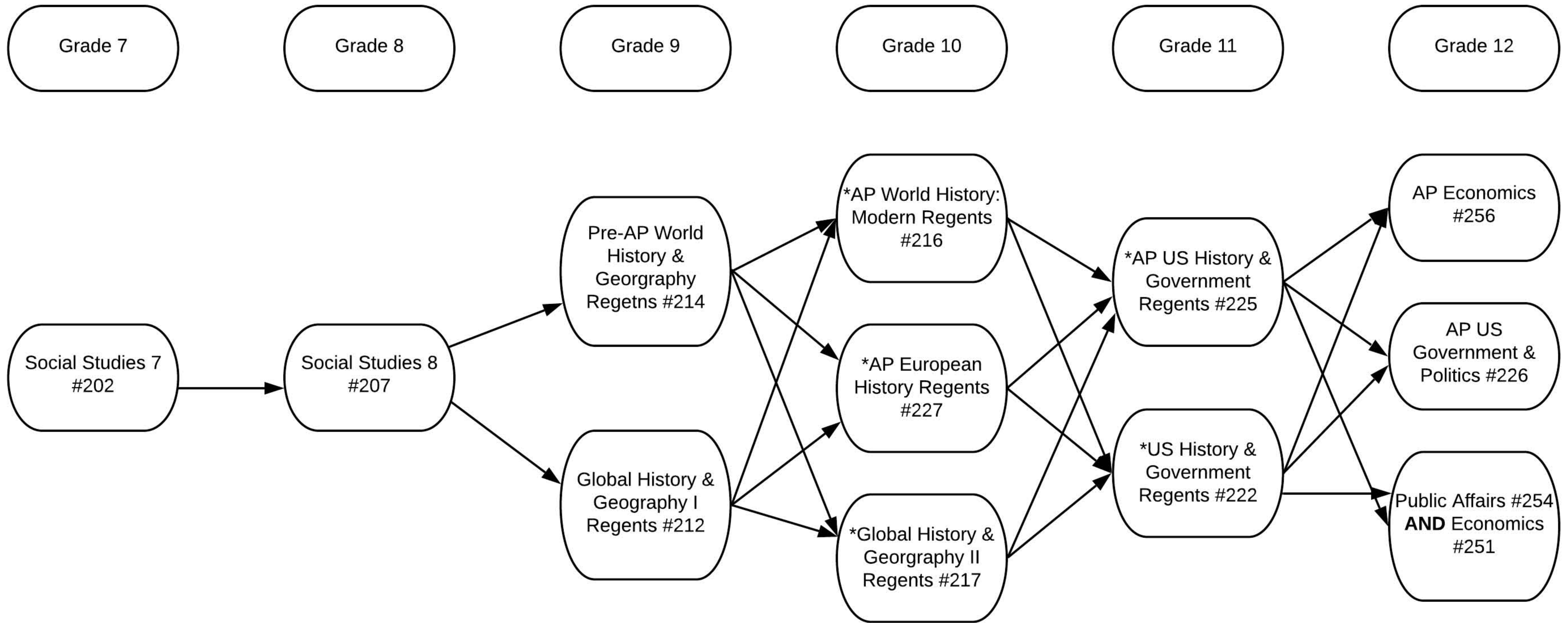
The following electives are offered for grades 10-12: Marine Biology, Oceanography (482 & 483); Forensic Science (435); Anatomy and Physiology (488); Science in the 21st Century (479); Advanced Science Research Honors (454H-456H)

The following electives are offered to grades 9-12: Research Honors I & II (448H & 449 H); Independent Research Honors (450H)

Note: Electives are not a substitute for a required laboratory science class. We strongly encourage students to take four years of Regents laboratory science, including Biology, Earth Science, Chemistry and Physics.

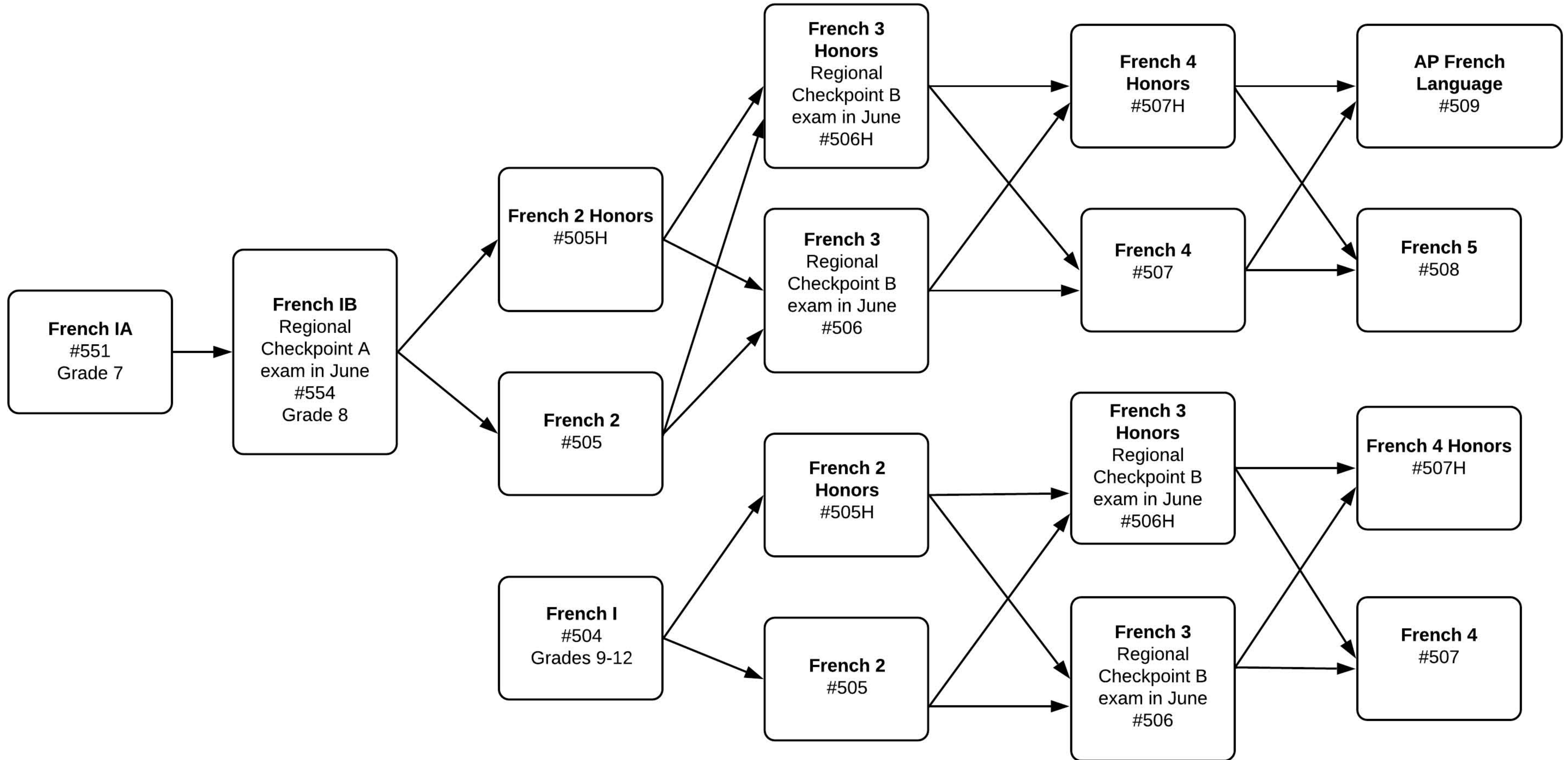


# Social Studies Curriculum



\* All students must take the Global History & Geography Framework Regents at the end of 10th Grade and the US History & Government Regents at the end of 11th Grade.

# French Curriculum



# Spanish Curriculum

